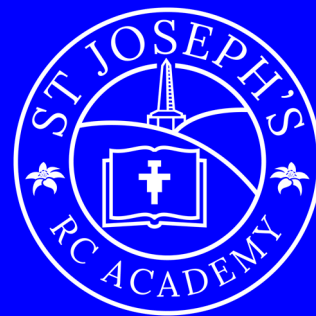


St Joseph's Journal

16TH OCTOBER 2020



Don't forget to join us in our Daily Reflections

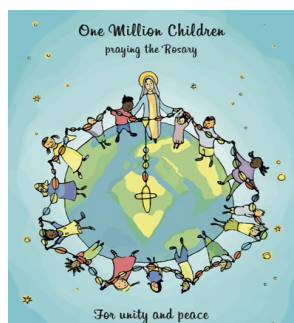
A reminder of the link to follow: <https://www.youtube.com/channel/UC91w58cn1vnCFWUwjsNUAbA/videos>

School Dinners

When we return to school on Monday 2nd November after our October half term break, you must give at least two weeks notice before making any changes to your choices for packed lunch or school dinners. You may continue to have a combination of both packed lunches and school dinners within a week, however these must be consistent from one week to the next. We want to support changing circumstances as much as possible but also need to reduce food waste and help save costs for school. We thank you for your continued support.

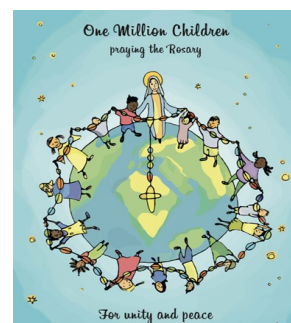
Cash Payments

We have now moved to a 100% cashless school. You will no longer be able to make cash payments to school (unless otherwise stated). If you haven't already downloaded the School Gateway app, then now is a good time to do so. For those of you without a smartphone or unable to download the app, the school office will be able to create a PayPoint voucher, where you will then need to top up anywhere that offers the PayPoint service, for example Cryers Newsagent or One Stop.



One Million Children Praying the Rosary

On Sunday, Aid to the Church in Need are inviting families to pray the rosary together for peace and unity in the world. We would like to encourage you to join families and children from all over the world to pray a decade of the Rosary. The Pupil Chaplains have recorded a video leading a decade of the Rosary:



WHAT LOCKDOWN TIER ARE YOU?

See how your area is faring with coronavirus cases

HIGH RATE

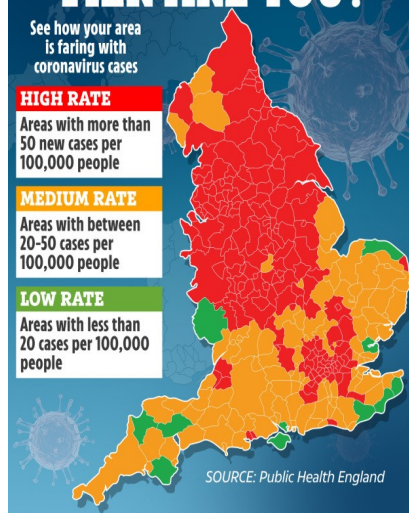
Areas with more than 50 new cases per 100,000 people

MEDIUM RATE

Areas with between 20-50 cases per 100,000 people

LOW RATE

Areas with less than 20 cases per 100,000 people



SOURCE: Public Health England

Calderdale Tier 2 lockdown announcement:

The main difference, compared to the previous local restrictions, is that more than one household, up to the rule of 6, can meet outdoors in private gardens and open spaces, as well as outside in hospitality, retail and leisure settings. However more than one household must still not meet inside homes or indoors in hospitality, retail and leisure venues.

In addition to the national restrictions which apply to the whole country, in Calderdale the following Tier 2 restrictions also apply from Wednesday 14th October: People must not socialise with anybody outside of their household or support bubble in any indoor setting, whether at home or in a public place: People must not socialise in a group of more than 6 outside, including in a garden or other spaces like beaches or parks: Businesses and venues can continue to operate in a Covid-secure manner, other than those which remain closed in law: People can continue to travel to venues or amenities which are open, for work or to access education, but should look to reduce the number of journeys they make.



Cedar Patryk - Working hard in everything he's done
Elm Whole class - for good behaviour in a difficult week
Larch Oskar - Setting a good example & helping in class
Oak Izabella - All round effort in class
Mr Sutcliffe Maths Pippa - Has made really good progress



Cedar Dexter P - Super writing & Phonics work
Elm Aleks - Thinking carefully about words for his Poem
Larch Joshua - Making good progress in reading
Oak Sally - For her good work in Maths
Mr Sutcliffe Maths Niamh - Always working really hard

Windows on the World

Looking for something to do over half term as the nights draw in? If you are not required to isolate, why not enjoy a socially distanced evening stroll around Todmorden town centre and take in some local creativity.

Instead of Lamplighter, Handmade Parade brings you Windows on the World, artworks created by local schools and Tod residents and generously displayed by local shops and businesses. Some businesses have created their own themed displays to help brighten our town as winter approaches.

The windows will be lit up between 5-9pm starting Saturday 24 October until Sunday 1 November.

This is part of Handmade Parade's bigger project WE ARE HERE which will create a short film using local peoples artwork, instead of our usual outdoor events such as Lamplighter. Todmorden has created woodland scenes as night falls to help tell part of the story of an intrepid animal adventure of loyalty, courage and friendship.

Follow Handmade Parade on facebook, twitter and instagram or see the website to learn more about the project and watch the film once it is finished. We would love it if you send us your photos of you in front of the artworks and any comments you want to make about the project.

Shops and businesses participating are:

Morrisons, Waterside Lodge, The Golden Lion, Vedas, Get Stuffed, Tod Almighty, Ali Baba's, Creative with Nature, The Boardroom, The Apothecary, Healthy Minds, Age Concern, Tourist Information, Legacy Art Gallery, DC School of Dance, Calder Cheese House, The Wellington Inn, The Quirky Fox Den, Perfect for Pets, The Market Place, Wonderfully Made, Physio and Therapies.

Thank you to everyone who has taken part and we hope that Lamplighter can return when it is safe for us to fill the streets with people, light and magic again.



Acorns & Beech Class - home learning Google Classrooms

You will receive a letter via email today, with individual logins and instructions for your child's learning



Class email contacts for home learning;

ACORNS@stjosephs.romerocat.com

BEECH@stjosephs.romerocat.com



Check your class page on the website...

www.st-josephs-tod.org.uk

Dan's PE Award

This weeks

winner is:

Alfie



CREEPY CRAFTS

This is to replace our usual PTA 'Spooky Shin Dig'

MONDAY 19th OCTOBER 1.30 - 3.00PM - LOWER SCHOOL

FRIDAY 23rd OCTOBER 1.30 - 3.00PM - UPPER SCHOOL

Please pay your contribution of £2 to your Class TA so they can keep a note of payments received.

CHILDREN ARE INVITED TO FETCH THEIR OWN COSTUME TO CHANGE INTO AT LUNCH TIME

ATTENDANCE

This week's attendance: 92.7%

This week's top class: Elm 95.9% Attendance YTD: 93.7%